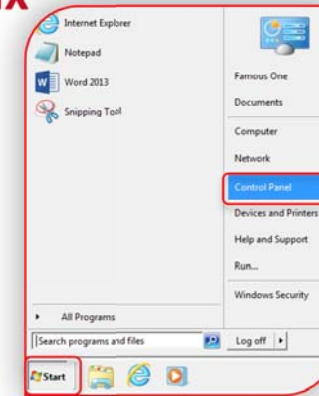


## Add & Enable Maori Keyboard in Citrix

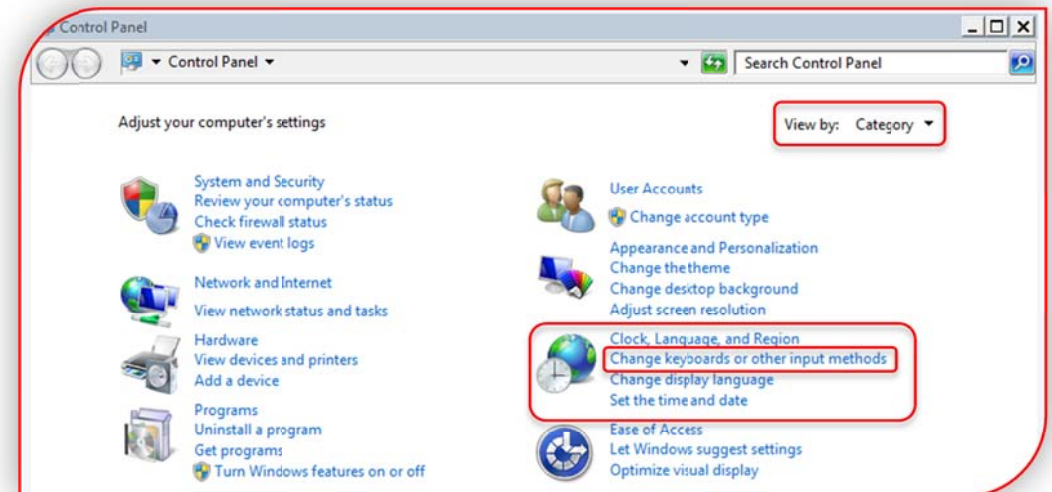
This guide will show you how to enable and use the Maori keyboard layout in Citrix.

### Add Maori Keyboard

1. To get started click on the Windows **Start** button in the bottom left hand corner of your screen then select **Control Panel** on the right.



2. When the Control Panel has opened, look for **Clock, Language and Region**.  
Select **Change keyboards or other input methods**.

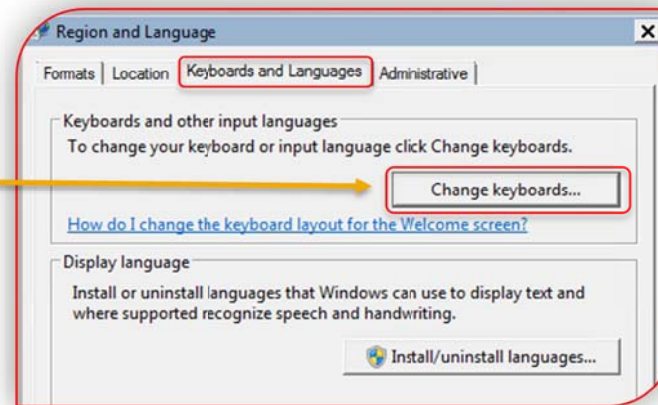


### Contact Us

For further support visit <http://icts.manukau.ac.nz/> or contact the Service Desk on 09 968 7600 option 2  
MIT Otara, NB Block, Newbury Street, Otara | Private Bag 94006, Manukau 2241, Auckland, New Zealand  
T 09 9687600 | E icts.helpdesk@manukau.ac.nz | W icts.manukau.ac.nz

Continued

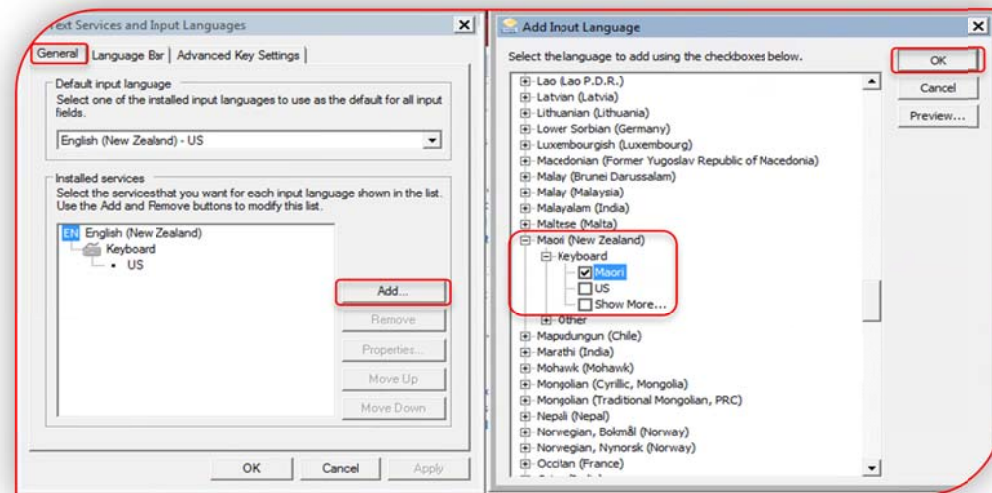
3. Select the **Keyboards and Languages** tab then choose **Change Keyboard**.



4. On the **General** tab click on **Add** under Installed Services.

5. After clicking on Add, the **Add Input Language** screen will open up. Look for Maori (New Zealand) and click on the plus sign (+) under **Keyboard** to expand.

6. Check the box for Maori and click **OK** when done.

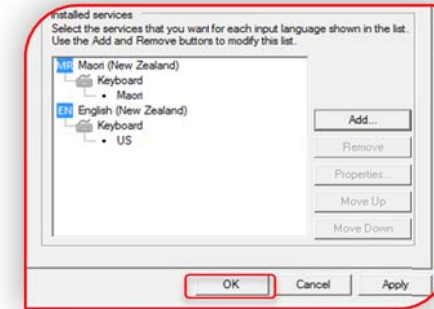


**Contact Us**

For further support visit <http://icts.manukau.ac.nz/> or contact the Service Desk on 09 968 7600 option 2  
MIT Otara, NB Block, Newbury Street, Otara | Private Bag 94006, Manukau 2241, Auckland, New Zealand  
T 09 9687600 | E icts.helpdesk@manukau.ac.nz | W icts.manukau.ac.nz

Continued

- Once the keyboard is added you will see **MR** Maori (New Zealand) showing in the list. Click **OK** to finish and exit out from all screens.



### Enable Maori Keyboard

Now that the keyboard has been added, an easy way to enable it when you need it, is to select **MR Maori (New Zealand)** from the Language Bar docked in the Taskbar.

*NB: If MR is displayed in the Language bar with a tick beside it, this indicates that the Maori keyboard is active.*



To include Macrons on vowels in Te Reo Maori, select the button on your keyboard with “~” showing, at the same time as you key a vowel.



### Contact Us

For further support visit <http://icts.manukau.ac.nz/> or contact the Service Desk on 09 968 7600 option 2  
MIT Otaru, NB Block, Newbury Street, Otaru | Private Bag 94006, Manukau 2241, Auckland, New Zealand  
T 09 9687600 | E icts.helpdesk@manukau.ac.nz | W icts.manukau.ac.nz